



MONTHLY MEMBERSHIP PROGRESS REPORT

District 11 E2

Results as of: 5/31/2017

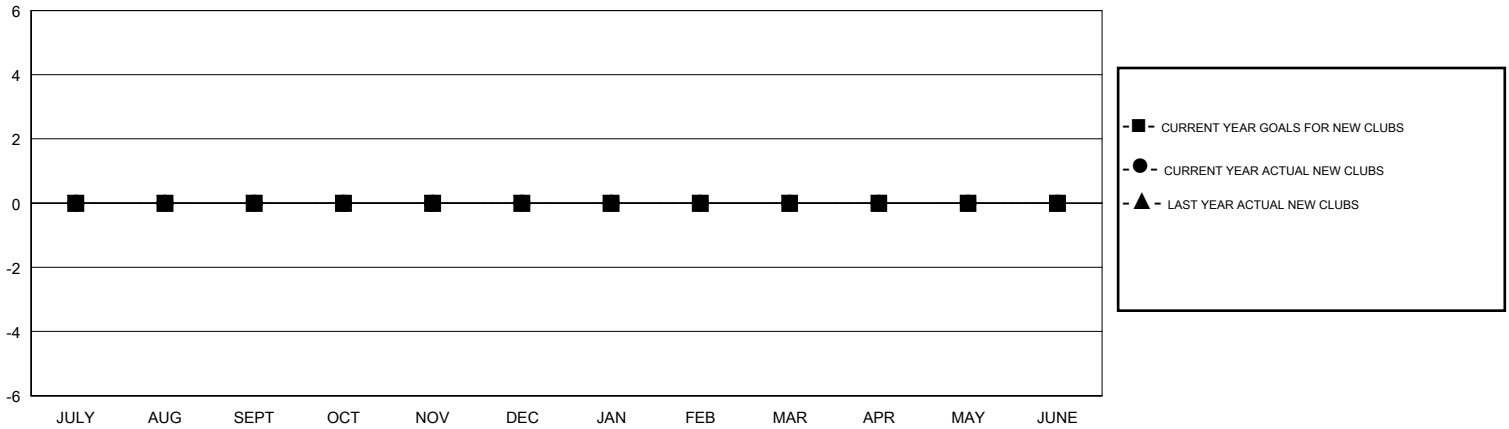
GMT: THOMAS MATNEY

LOCATION MICHIGAN

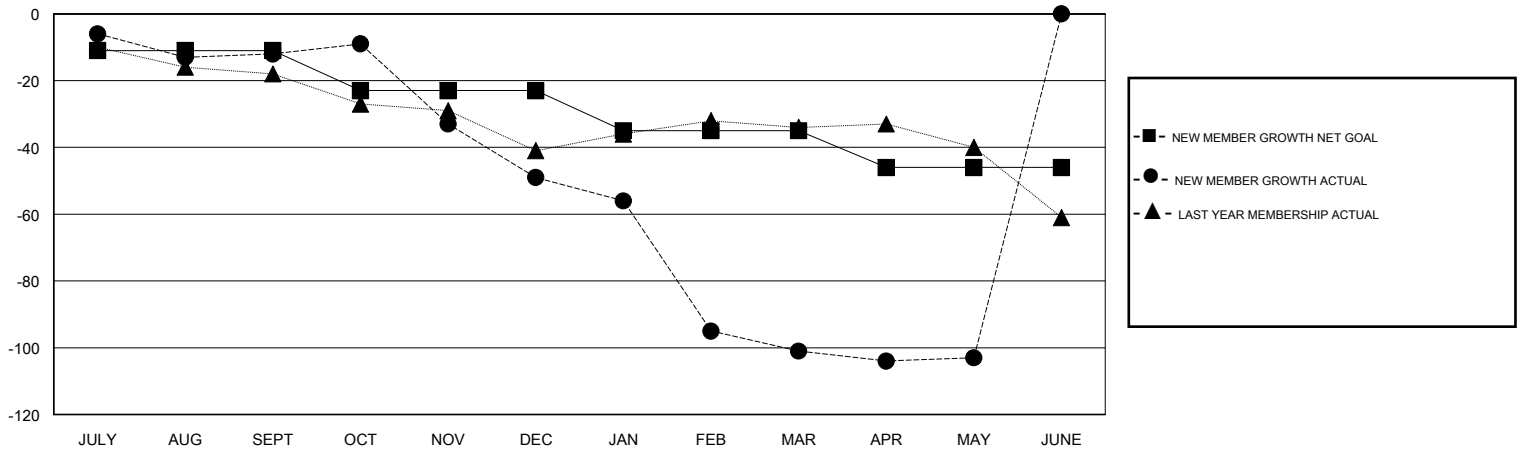
GMT CA

Clubs				Members			
RESULTS FOR 2016-2017				RESULTS FOR 2016-2017			
QUARTER	NEW CLUB GOAL	NEW CLUBS	DROPPED CLUBS	QUARTER	NEW MEMBER GROWTH NET GOAL (not reinstated or transfers)	NEW MEMBER GROWTH ACTUAL (not reinstated or transfers)	DROPPED MEMBERS ACTUAL (including transfers)
JULY/AUG/SEPT	0	0	1	JULY/AUG/SEPT	-11	28	40
OCT/NOV/DEC	0	0	0	OCT/NOV/DEC	-12	13	50
JAN/FEB/MAR	0	0	1	JAN/FEB/MAR	-12	10	62
APR/MAY/JUNE	0	0	0	APR/MAY/JUNE	-11	8	10

GOALS AND ACTUAL NEW CLUBS CUMULATIVE



GOALS AND ACTUAL MEMBERS CUMULATIVE



DROPPED CLUBS: 2	22 CLUBS OF 35 ADDED 1 OR MORE NEW MEMBERS	GENDER DISTRIBUTION
		MALE 684 (73.16%)
		FEMALE 251 (26.84%)
DROPPED MEMBERS	CLICK HERE FOR CUMULATIVE MEMBERSHIP DATA	TOTAL FAMILY UNIT MEMBERS 130
DECEASED 23		FAMILY MEMBERS PAYING HALF DUES 66
CLUB CANCELLED 0		
OTHER 139		
TOTAL 162		